

The Open Door Centre Outline of Ground Floor

Details of accommodation and facilities available

Access: wheelchair access into the centre, both from Kettering Road and the car park to the rear, where there is a designated disable parking space. The first floor is accessible to wheelchairs via a lift.



1 Concourse

Room dimensions: 4.5m x 21m
Seats 24 in cafe style arrangement, ideal as a gallery and exhibition space or for an informal gathering. Designated kitchenette.

2 Memorial Hall

Room dimensions: 7.1m x 13m
Comfortably seats 70 in either formal seminar or dining layout. Direct access to kitchen. Amplification system.

3 Meeting Room

Room dimensions: 7.2m x 4.4m
Comfortably seats 30 in formal meeting or seminar layout.

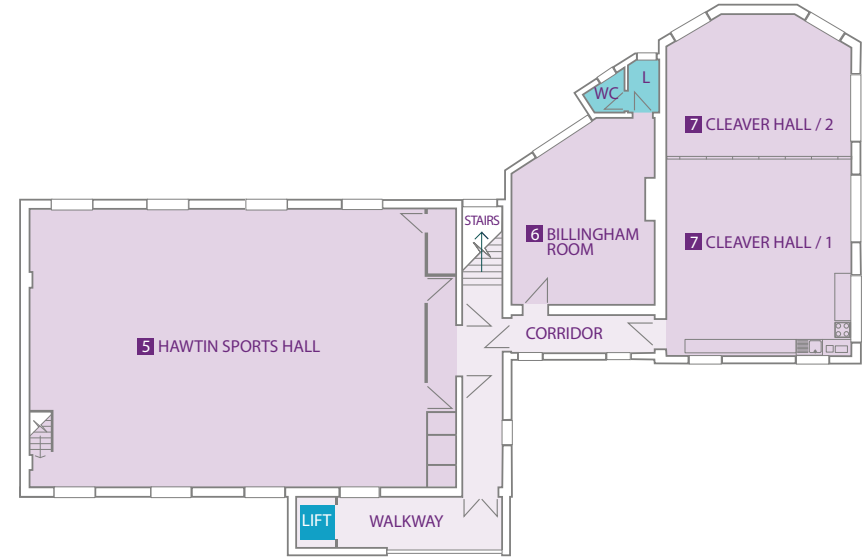
4 Kitchen

Commercial standard catering facility. Inclusive of servery and designated toilet facilities.

The Open Door Centre Outline of First Floor

Details of accommodation and facilities available

Access: wheelchair access into the centre, both from Kettering Road and the car park to the rear, where there is a designated disable parking space. The first floor is accessible to wheelchairs via a lift.



5 Hawtin Sports Hall

Room dimensions: 15m x 10.6m
High ceiling sports hall with wooden sprung floor. Suitable for most indoor sports, such as: basketball, volleyball and 5-side football.

6 Billingham Room

Room dimensions: 5m x 7m (max)
Comfortably seats 24 in formal meeting or seminar layout.

7 Cleaver Hall

Room dimensions: 7.1m x 13m
Comfortably seats 70 in formal meeting or seminar layout. Ideal multipurpose training room or games room. Facilities include, pool table, table tennis, table football and air hockey. Designated kitchenette.

Hall can be divided into two rooms.
Dimensions: room 1 - 7.1m x 7.5m,
room 2 - 7.1m x 5.5m